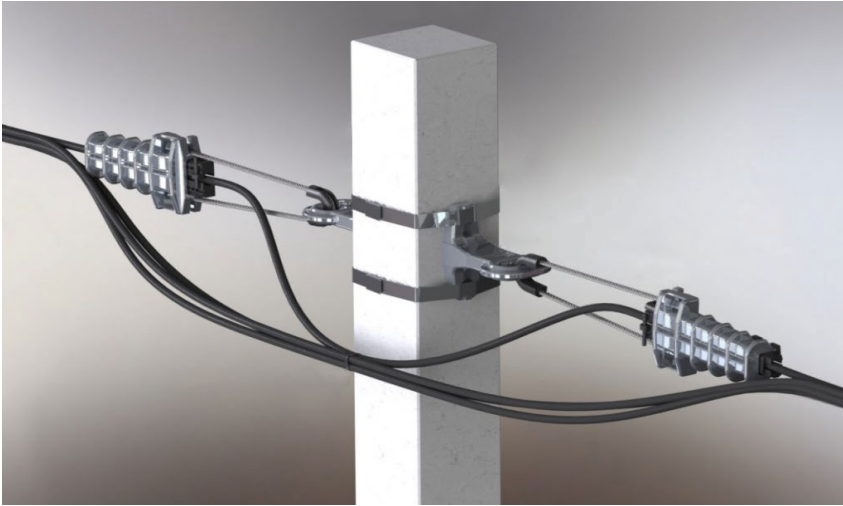


Optowire Anchor clamp

Anchor clamp PAL-500/1000/1500/2000

Anchor clamp **PAL-500/1000/1500/2000** is designed for anchor fastening. During installation, the conductor or cable is placed in the clamp between the wedges and clamped. The clamp body is made of aluminum alloy, the inner insert and wedges are made of high-strength UV-resistant polymer.



TECHNICAL SHEET

Type	PAL-500	PAL-1000	PAL-1500	PAL-2000
Material	Aluminum alloy/plastic			
Loop Type	stainless steel wire			
Cable OD (mm)	6-12	7-12	7-13	13-18
MTL (kN)	5	12	15	20
Operating temperature(°C)	from - 60 °C to 40 °C			
Installation temperature(°C)	from - 40 °C to 40 °C			